

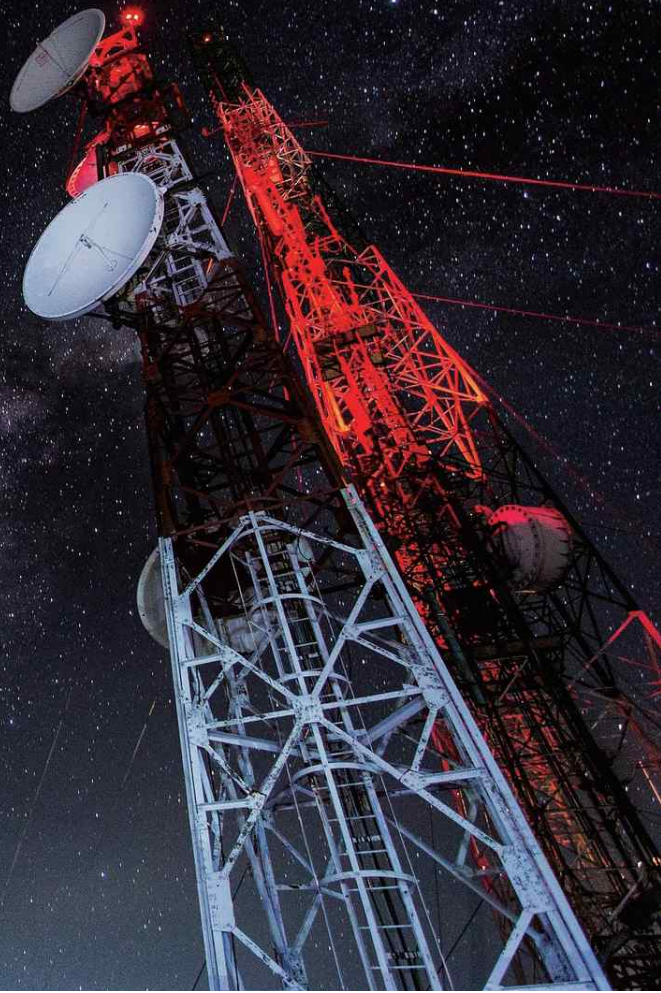


# Global satellite communication devices..



# Atron

## C-Band 5G Interference Rejection Solution



**Atron** was founded in 1999 by skilled people with experience in developing, manufacturing and selling Microwave products. We develop, produce and sell LNB, BDC and LNA products of C, X, Ku and Ka-Band for the VSAT system. With over 25 years of accumulated experience, we would like to introduce our LNB, BDC, LNA, etc. to the Global VSAT market.



# CONTENTS

## 1. LNB (Low Noise Block down converter)

1) C-Band PLL LNB	.....	B300(X)	.....	5
2) C-Band PLL LNB	.....	B300I(X)	.....	6
3) C-Band 5G Rejection PLL LNB	.....	B300R	.....	7
4) C-Band Auto Reference PLL LNB	.....	B300A	.....	8
5) C-Band PLL LNB	.....	B500	.....	9
6) C-Band PLL LNB	.....	B500I	.....	10
7) C-Band 5G Rejection PLL LNB	.....	B500R	.....	11
8) C-Band 5G Rejection PLL LNB	.....	G300(X)	.....	12
9) C-Simultaneous Band PLL LNB	.....	S300(X)	.....	13
10) Ku-Band PLL LNB	.....	A700(X)	.....	14
11) Ku-Band PLL LNB	.....	A500(X)	.....	15
12) Ku-Wide Band PLL LNB	.....	A500E(X)	.....	16
13) Ku-Band Auto Reference PLL LNB	.....	A500A	.....	17
14) Ku-Dual Band PLL LNB	.....	AD500(X)	.....	18
15) Ku-Dual Band Auto Reference PLL LNB	.....	AD500A	.....	19
16) Ku-Quad Band PLL LNB	.....	AQ500(X)	.....	20
17) Ku-Simultaneous Band PLL LNB	.....	S500(X)	.....	21
18) Ka-Band PLL LNB	.....	A600(X)	.....	22
19) Ka-Band PLL LNB	.....	A900(X)	.....	23
20) Ka-Band Auto Reference PLL LNB	.....	A900A	.....	24
21) Ka-Dual Band PLL LNB	.....	AD900(X)	.....	25
22) Ka-Triple Band PLL LNB	.....	AT900(X)	.....	26
23) Ka-Quad Band PLL LNB	.....	BQ900(X)	.....	27
24) Ka-Five Band PLL LNB	.....	BF900(X)	.....	28
25) Ka-Simultaneous Band PLL LNB	.....	S900(X)	.....	29
26) Ka-Simultaneous Triple Band PLL LNB	.....	ST900(X)	.....	30
27) Ka-Simultaneous Quad Band PLL LNB	.....	SQ900(X)	.....	31
28) X-Band PLL LNB	.....	A100(X)	.....	32
29) X-Band Auto Reference PLL LNB	.....	A100A	.....	33

## 2. BDC (Block Down Converter)

1) C-Band BDC	.....	BDC-300(X)	.....	35
2) Ku-Band BDC	.....	BDC-500(X)	.....	36
3) Ka-Band BDC	.....	BDC-900(X)	.....	37
4) X-Band BDC	.....	BDC-100(X)	.....	38

## 3. LNA (Low Noise Amplifier)

1) C-Band LNA	.....	LNA-300	.....	40
2) Ku-Band LNA	.....	LNA-500	.....	41
3) Ka-Band LNA	.....	LNA-900	.....	42
4) X-Band LNA	.....	LNA-100	.....	43
5) X-Band LNA	.....	LNA-200	.....	44
6) L,S-Band LNA	.....	LNA-1000, LNA-2000	.....	45
7) Wide-Band LNA	.....	LNA-1000-6000	.....	46

## 4. BPF (C-Band Waveguide Band Pass Filter)

1) C-Band BPF	.....	WG300	.....	48
2) C-Band BPF	.....	WG301	.....	49
3) C-Band Enhanced BPF	.....	WG330	.....	50

## 5. 6-Band LNB Controller

1) Rotary Switch type	.....	CR6	.....	52
2) Rotary Switch type	.....	CR6I	.....	53
3) Rotary Switch type	.....	CR6X	.....	54
4) TTL type	.....	CT6	.....	55
5) TTL type	.....	CT6I	.....	56
6) TTL type	.....	CT6X	.....	57

## 6. Simultaneous LNB

## 7. 5G Rejection

# Low Noise Block down converter

# LNB

LNB



## C-Band PLL LNB

Single Band	B300, B300I series
5G Rejection (IF Filter)	B300R series
5G Rejection (RF Filter)	G300 series
Auto Reference	B300A
Simultaneous Band	S300 series



## Ku-Band PLL LNB

Single Band	A500, A700 series
Wide Band	A500E series
Dual Band	AD500 series
Quad Band	AQ500 series
Auto Reference	A500A, AD500A series
Simultaneous Band	S500 series



## Ka-Band PLL LNB

Single Band	A600, A900 series
Dual Band	AD900 series
Triple Band	AT900 series
Quad Band	BQ900 series
Five Band	BF900 series
Auto Reference	A900A series
Simultaneous Band	S900, ST900, SQ900 series



## X-Band PLL LNB

Single Band	A100
Auto Reference	A100A



# Block Down Converter

# BDC

BDC

## C-Band BDC

BDC-310	3,4 – 4,2 GHz
BDC-320	4,5 – 4,8 GHz



## Ku-Band BDC

BDC-510	10,7 – 11,7 GHz
BDC-520	10,95 – 11,7 GHz
BDC-540	11,7 – 12,2 GHz
BDC-549	11,7 – 12,75 GHz
BDC-560	12,2 – 12,7 GHz
BDC-570	12,25 – 12,75 GHz



## Ka-Band BDC

BDC-910	17,2 – 18,2 GHz
BDC-920	18,2 – 19,2 GHz
BDC-930	19,2 – 20,2 GHz
BDC-940	20,2 – 21,2 GHz
BDC-950	21,2 – 22,2 GHz



## X-Band BDC

BDC-100	7,25 – 7,75 GHz
---------	-----------------



# Low Noise Amplifier LNA



## C-Band LNA

LNA-300	3.4 – 4.2 GHz
LNA-310	4.5 – 4.8 GHz



## Ku-Band LNA

LNA-500	10.7 – 12.75 GHz
LNA-510	10.7 – 11.7 GHz
LNA-520	11.7 – 12.75 GHz



## Ka-Band LNA

LNA-910	17.2 – 18.2 GHz
LNA-920	18.2 – 19.2 GHz
LNA-930	19.2 – 20.2 GHz
LNA-940	20.2 – 21.2 GHz
LNA-950	21.2 – 22.2 GHz



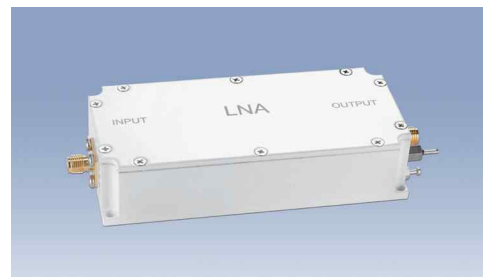
## X-Band LNA

LNA-100	7.25 – 7.75 GHz
LNA-200	7.25 – 7.75 GHz



## L.S-Band LNA

LNA-1000 series	1100 – 1700 MHz
LNA-2000 series	2100 – 2500 MHz
LNA-1000-6000	1000 – 6000 MHz



LNA

# C-Band Waveguide Band Pass Filter BPF



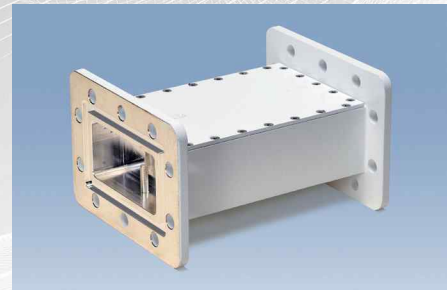
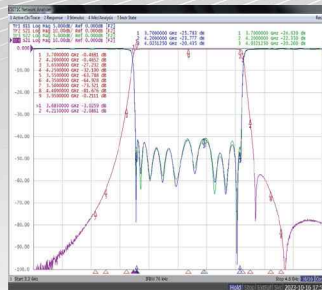
## Various Frequency Range

3,625 – 4,2 GHz	3,9 – 4,2 GHz
3,7 – 4,2 GHz	4,0 – 4,2 GHz
3,8 – 4,2 GHz	4,5 – 4,8 GHz

※ Customized frequency range available

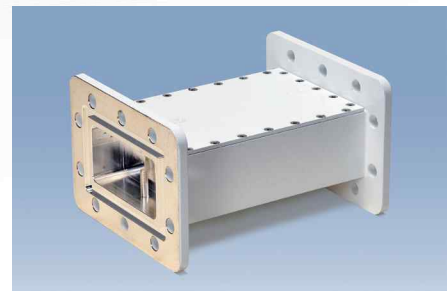
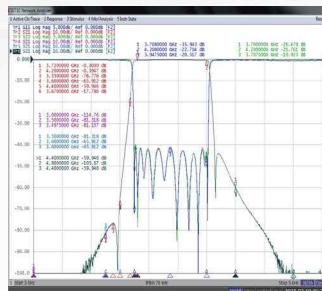
## WG300 series

Rejection	Pass Band
25 dB min.	+,- 50 MHz
60 dB min.	+,- 150 MHz
70 dB min.	+,- 200 MHz



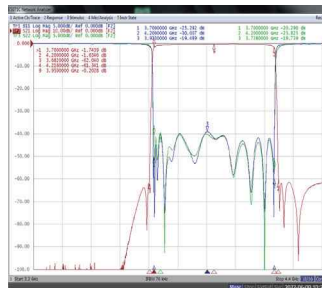
## WG301 series

Rejection	Pass Band
61 dB min.	- 200 MHz
60 dB min.	- 100 MHz
55 dB min.	4400 to 4800 MHz



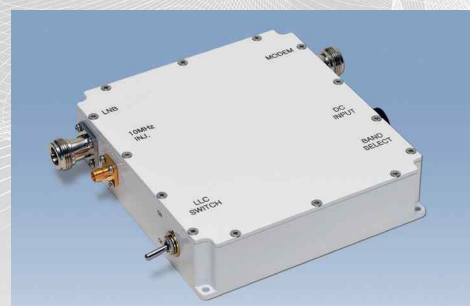
## WG330 series

Rejection	Pass Band
60 dB min.	- 18 MHz
60 dB min.	+,- 150 MHz
70 dB min.	+,- 200 MHz
25 dB min.	4,23 GHz
70 dB min.	4800 to 4990 MHz



BPF

# 6 Band LNB Controller



Controller

## Controller series

Model No	Band Selection	10 MHz Reference	Model No	Band Selection	10 MHz Reference
CT6X	TTL type	External (Injection SMA)	CR6X	Rotary Switch	External (Injection SMA)
CT6I		Internal	CR6I		Internal
CT6		None	CR6		None

## Band Selection-Rotary Switch type

Band	Band select by rotary SW	Band	Band select by rotary SW
Band 1	13 VDC	Band 4	18 VDC & 22 KHz
Band 2	13 VDC & 22 KHz	Band 5	22 VDC
Band 3	18 VDC	Band 6	22 VDC & 22 KHz

## Band Selection-TTL type

Band	Pin 1 (Voltage select)	Pin 2 (22KHz Tone)	Pin 4 (22V select)	Output
Band 1	L	L	L	13 VDC
Band 2	L	H	L	13 VDC & Tone
Band 3	H	L	L	18 VDC
Band 4	H	H	L	18 VDC & Tone
Band 5	L	L	H	22 VDC
Band 6	L	H	H	22 VDC & Tone

※ L : 0~0.8V, H : 2.5~5V (25uA)